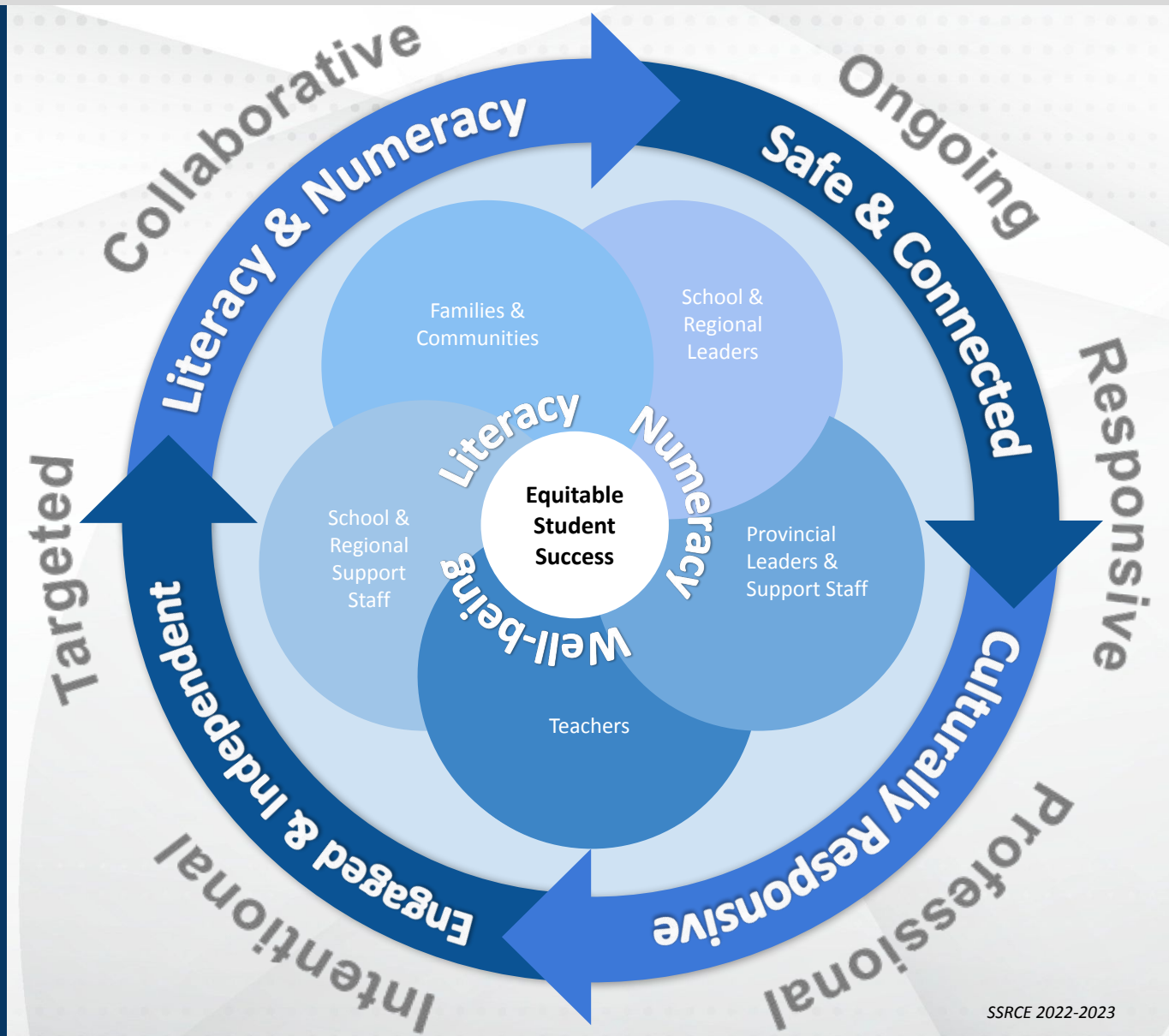




All students can learn with enough time, practice, and support. A safe & connected environment provides baseline conditions for learning.

REGIONAL GOALS

- ✓ Adopt a Culturally Responsive Lens
- ✓ Support conditions and build skills to increase students' feelings of safety & connection
- ✓ Increase Consistent Engagement & Independence
- ✓ Improve all students' achievement levels in literacy & numeracy

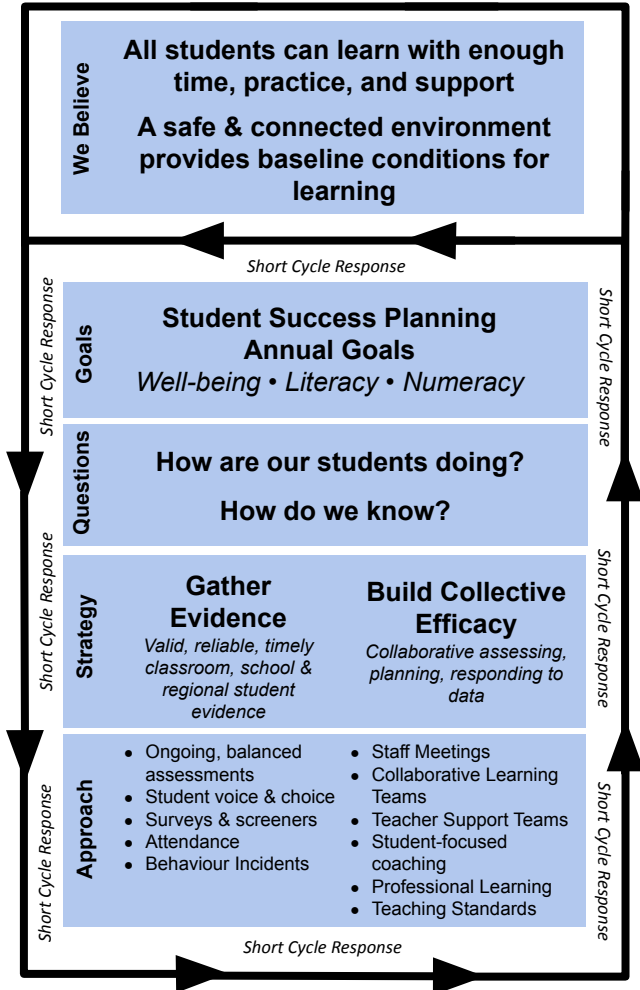


The South Shore Regional Centre of Education is committed to ensuring a high-quality, culturally, and linguistically responsive and equitable education that supports the well-being and achievement for all students as outlined in Nova Scotia's Inclusive Education Policy.

The South Shore Regional Centre of Education is committed to ensuring a high-quality, culturally, and linguistically responsive and equitable education that supports the well-being and achievement for all students as outlined in Nova Scotia's **Inclusive Education Policy**. This policy informs Student Success Planning.

INCLUSIVE EDUCATION POLICY

MTSS + CRP + UDL



Equitable Student Success

Regional Student Success Plan Strategy



Adopt a Culturally Responsive Lens

- Know our students as they want to be known
- Align instructional practices and resources with students' lived experiences
- Foster a learning environment that reflects student voice and choice



Support conditions and build skills to increase students' feelings of safety & connection

- Procure and support consistent use of diverse and reflective educational resources and practices
- Define and support the implementation of action steps with school and regional leaders to support RCH
- Support intentional skill-building in the areas of: self-esteem, self-management, social awareness, relationship skills, responsible decision making
- Create safe and connected learning environments by co-creating success criteria and providing professional learning opportunities in the following areas: predictability & consistency, emotional regulation & healthy choices, psychological safety, belonging & positive relationships



Increase Consistent Engagement & Independence

- Ground instruction in real-world learning experiences, explicitly
- Intentional daily planning to implement high leverage Tier 1 practices (MTSS & UDL)
- Integrate literacy, numeracy, and well-being across the curriculum areas
- Provide daily opportunities to apply learning of essential skills



Improve all students' achievement levels in literacy and numeracy

- Backward Design: Align instruction with clear success criteria as outlined in the NS Curriculum
- Respond to assessment and student learning through short cycles (daily, weekly, monthly)
- Workshop Model/3-part Lesson and flexible small group instruction