

PARENT/GUARDIAN CONCERN PROTOCOL



South Shore
Regional Centre for Education

What to Expect From the SSRCE Concern Resolution Protocol Process

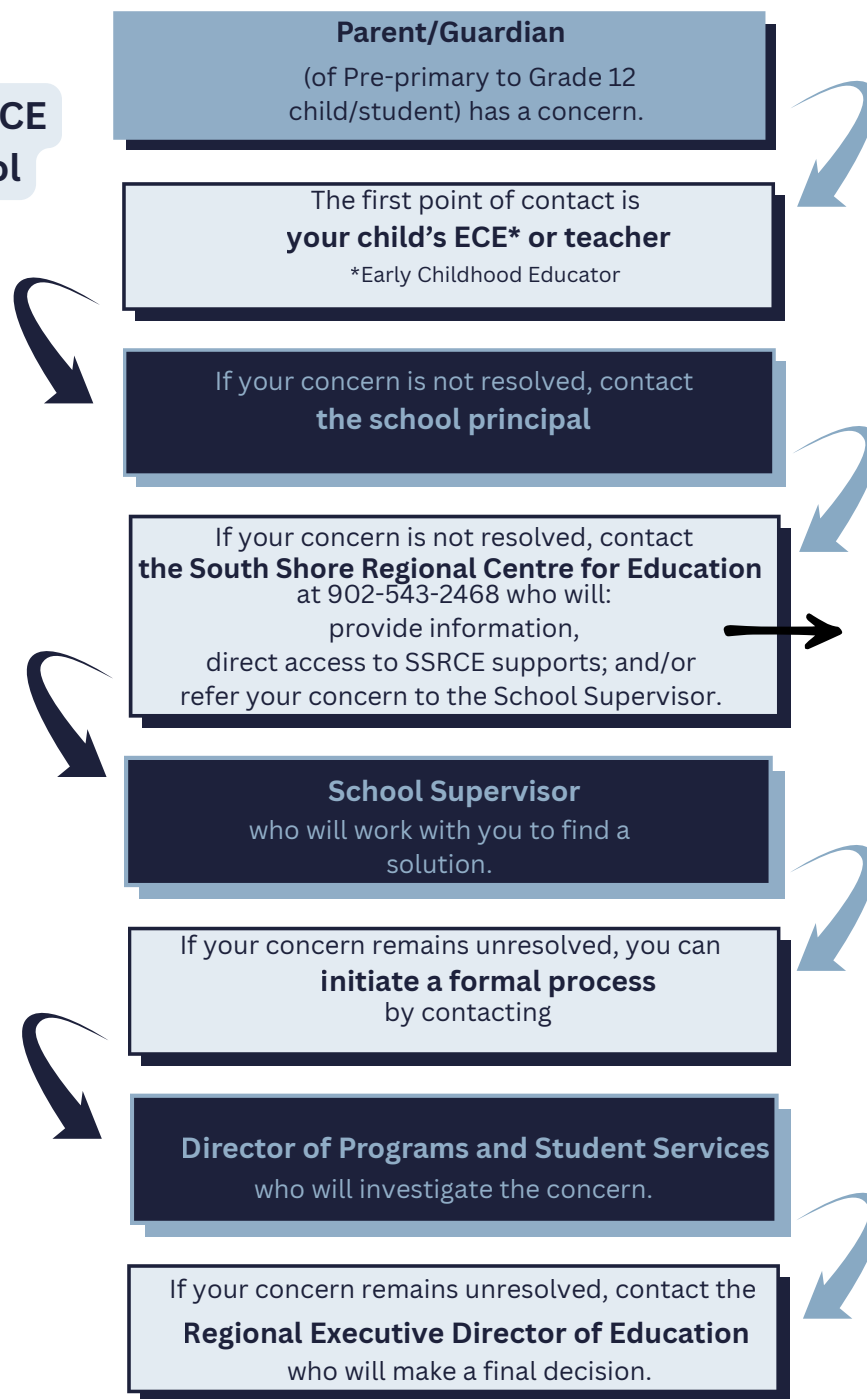
Your concern matters to us
and you can expect problems
to be resolved in a
collaborative conversation
rather than via emails.

School Supervisor

- Follow up phone call to gather critical information.

Director of Programs and Student Services:

- a collaborative in-person meeting.
- A summary of meeting minutes will be taken.
- Audio/video recording will not be permitted by any party.



SSRCE Supports Include:

- RCH Team
 - Coordinator of Mi'kmaw Education Services
 - Coordinator of African Canadian Education
 - Equity Consultant
- Programs Coordinators
- Student Services Coordinator/Staff

***Please do not contact the
Regional Executive Director until
all other steps have been
followed***